

Linear

# MOMO R207

## Fixture Guide

# KKDÖ

Indoor/Outdoor | Surface | Dynamic output up to 1004lm/m (306lm/ft)

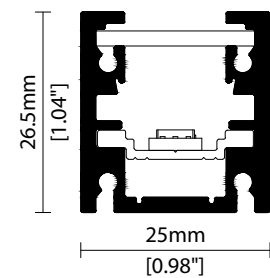


### Key applications

- ✓ Architectural detail
- ✓ Backlighting & signage
- ✓ Bathrooms
- ✓ Building façades
- ✓ Cove lighting
- ✓ Direct lighting
- ✓ Exterior
- ✓ Interior
- ✓ Mirror back lighting
- ✓ Pathways/driveways
- ✓ Public spaces
- ✓ Special effect
- ✓ Wall grazing
- ✓ Window reveal
- ✓ Wet area

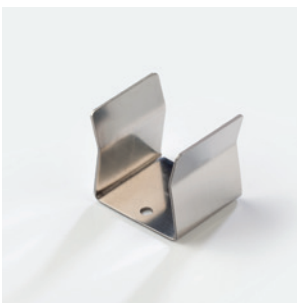
### Key features

- ✓ Adjustable
- ✓ Custom lengths
- ✓ Constant Voltage (CV)
- ✓ Diffusion: homogenous
- ✓ Direct view
- ✓ Extensive CCT range
- ✓ Glare control options
- ✓ IP44 moisture resistant
- ✓ IP67 waterproof
- ✓ LEDmix dynamic white
- ✓ Lens options
- ✓ Nano louvre



C - Diffused Cover

### MOUNTING METHODS



KKCP-03 Clip



KKCP-09 Lock clip



KKBK-07 Fixing plate



KKBK-21 Adjustable bracket

## Warm dim (Dynamic white)

Output Luminance %

min DIM1 Input Level max

— CH1 (Warmer)  
— CH2 (Cooler)

**LEDmix R207**

CCT Selection 1      CCT Selection 2

**LEDmix R209**

CCT Selection 1      CCT Selection 2

LEDmix **warm dim** (Dynamic white) is a pre-programmed dimming curve setting enabling two different colour temperatures (CCTs) to blend harmoniously to achieve a warming lighting effect when dimmed.

KKDC LEDmix strips allow two separate CCT selections to be specified within the same PCB strip.

Use the table opposite to help determine which 2 CCT selections you require according to your preferred cool to warm dimming range.

*\*Note: The blended CCT is approx. 'cool-end' result at 100% brightness based on using the KKDC LED CCT specification.*

CCT Selection 1	CCT Selection 2	
	Blended CCT*	PCB CCT
1900K~	2000K 2100K 2200K 2300K 2500K 2600K 2700K 3000K 3500K	2100K PCB 2300K PCB 2500K PCB 2700K PCB 3000K PCB 3200K PCB 3500K PCB 4000K PCB 5000K PCB
2100K~	2200K 2300K 2400K 2600K 2700K 2800K 3000K 3600K	2300K PCB 2500K PCB 2700K PCB 3000K PCB 3200K PCB 3500K PCB 4000K PCB 5000K PCB
2300K~	2400K 2500K 2700K 2800K 2900K 3100K 3700K	2500K PCB 2700K PCB 3000K PCB 3200K PCB 3500K PCB 4000K PCB 5000K PCB
2500K~	2600K 2800K 2800K 3000K 3200K 3800K	2700K PCB 3000K PCB 3200K PCB 3500K PCB 4000K PCB 5000K PCB
2700K~	2900K 3000K 3100K 3400K 3900K	3000K PCB 3200K PCB 3500K PCB 4000K PCB 5000K PCB
3000K~	3100K 3300K 3500K 4000K	3200K PCB 3500K PCB 4000K PCB 5000K PCB
3200K~	3300K 3600K 4100K	3500K PCB 4000K PCB 5000K PCB
3500K~	3700K 4300K	4000K PCB 5000K PCB
4000K~	5100K	5000K PCB

## Tuneable white

Channel Mix Ratio %

min DIM1 Input Level max

— CH1 (Warmer)  
— CH2 (Cooler)

**LEDmix R207**

CCT Selection 1 CCT Selection 2

**LEDmix R209**

CCT Selection 1 CCT Selection 2

LEDmix **tunable white** enables two different LED colour temperatures (CCTs) to be specified within the same LEDmix strip.

Each CCT selection can then be independently controlled (via your dimming control system) to adjust the warm & cool light output (CCT selections) and thus tailor a blended light colour of your choosing.

CCT Selection 1	CCT Selection 2
1900K~	2100K 2300K 2500K 2700K 3000K 3200K 3500K 4000K 5000K
2100K~	2300K 2500K 2700K 3000K 3200K 3500K 4000K 5000K
2300K~	2500K 2700K 3000K 3200K 3500K 4000K 5000K
2500K~	2700K 3000K 3200K 3500K 4000K 5000K
2700K~	3000K 3200K 3500K 4000K 5000K
3000K~	3200K 3500K 4000K 5000K
3200K~	3500K 4000K 5000K
3500K~	4000K 5000K
4000K~	5000K

Linear

# MOMO R207

## Specification sheet



<b>Dimensions</b>	H26.5/W25/L103-2020mm* (H1.04/W0.98/L4.05-79.53in*) *Nano Louvre = 1020mm/40.16in max
<b>PCB Cut-point</b>	83.3mm increment/2000mm max* (3.28in increment/78.74in max*) *Nano Louvre = 1000mm/39.37in max
<b>LED Pitch</b>	13.9mm-144LED/m (0.55in - 44LED/ft)
<b>Chip</b>	<b>s-line</b> <b>k-line</b>
<b>Cover/Optics</b>	Clear (100°)/Diffused (95°)/KKLN-01 Lens (14°)/ KKLN-03 Lens (23°)/Diffused + Nano Louvre (35°)
<b>CCT</b>	<b>s-line:</b> 1900K/2100K/2300K/2500K/2700K/3000K/3500K/4000K/5000K <b>k-line:</b> 1900K/2100K/2300K/2500K/2700K/3000K/3500K/4000K/5000K
<b>LED binning</b>	<b>s-line:</b> 2.5-step MacAdam ellipse <b>k-line:</b> 3-step MacAdam ellipse
<b>CRI</b>	≥94
<b>Lifetime</b>	50,000 hours @ 25°C (50,000 hours @ 77°F)
<b>Operating temp</b>	T <sub>a</sub> = -25 to 50°C (T <sub>c</sub> max = 73°C) T <sub>a</sub> = -13 to 122°F (T <sub>c</sub> max = 163°F)
<b>IP Rating</b>	IP44/67
<b>Finish</b>	Silver anodised
<b>Mounting</b>	Surface mounting via clips or brackets
<b>Power feed</b>	Sheathed hardwire tails or male/female connectors
<b>Control</b>	0-10V/1-10V/DMX/DALI



### LED Grading Key

#### Exclusive Grade

<b>s</b> s-line*	*KKDC tuned CCT range
2-step CCT range	

#### Base Grade

<b>k</b> k-line	3-step commercial range Energy Star CCTs
-----------------	---

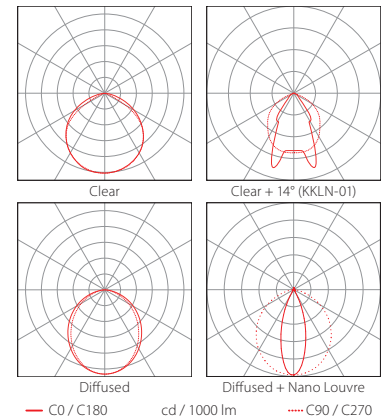
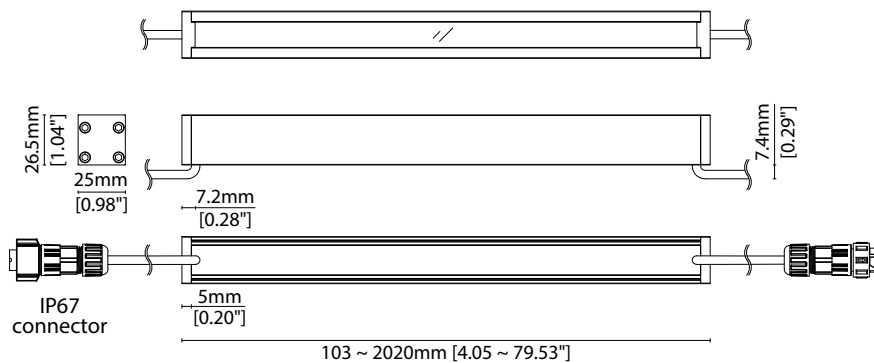
<b>Power consumption</b>	<b>Supply voltage</b>	<b>Supply current</b>
16W/m (4.88W/ft)	24V DC	0.67A/m (0.20A/ft)

### Performance Data (2100K+5000K)

	R1	R2	R3	R4	R5	R6	R7	R8	R9	R10	R11	R12	R13	R14
<b>k-line</b>	96	95	97	98	96	92	94	95	94	92	97	77	95	99

	Clear	Clear + KKLN-01 (14°)	Clear + KKLN-03 (23°)	Diffused Cover	Diffused + Nano Louvre	CRI	R9	Rf	Rg
<b>s-line</b>	1004lm/m (306lm/ft) 62.8lm/w	609lm/m (186lm/ft) 38.1lm/w	658lm/m (201lm/ft) 41.1lm/w	580lm/m (177lm/ft) 36.3lm/w	209lm/m (64lm/ft) 13lm/w	93	95	-	-
<b>k-line</b>	947lm/m (289lm/ft) 59.2lm/w	574lm/m (175lm/ft) 35.9lm/w	621lm/m (189lm/ft) 38.8lm/w	547lm/m (167lm/ft) 34.2lm/w	197lm/m (60lm/ft) 12.3lm/w	92	94	-	-



Data derived from independent UKAS / IESNA LM-79-08 accredited testing of production samples.

### FIXTURE

Model	Finish	Cover/Lens <sup>1</sup>	Grade <sup>2</sup>	LED	Colour (CCT)	Length Availability <sup>3</sup>	IP	Cable Length	Power Feed <sup>4</sup>	Input
MOMO MM	Silver Anodised	SA Clear	B <sup>7</sup>	R207 R207	1900K 19	m 103-2020mm 83.3mm increments	IP44 44 IP67 <sup>6</sup> 67	300mm/11.81" 0300	Single ø4.3mm sheath tail S00A	DC 24V g
		Clear + KKLN-01 (14°)	P <sup>7</sup>		2100K 21 2300K 23 2500K 25 2700K 27	i 4.05-79.53in 3.28in increments			Double ø4.3mm sheath tail D00A	
		Clear + KKLN-03 (23°)	A		3000K 30 3500K 35 4000K 40 5000K 50	(Specify length code OR total run length)			Single ø4.3mm sheath IP67 Male connector S67A Double ø4.3mm sheath IP67 connector D67A	
		Diffused	C							
		Diffused + Nano Louvre <sup>5,6</sup>	CN							

<sup>1</sup> Refer to **Cover/Lens Options** on **Options** pages      <sup>2</sup> Refer to **LED Grading Key** on **Specification sheet** page      <sup>3</sup> Refer to **Length Availability List** or enter total run length instead of length code  
<sup>4</sup> Refer to **Power Feed Options** on **Options** pages      <sup>5</sup> Max length available with Nano Louvre is 1020mm.  
<sup>6</sup> Nano Louvre suitable for IP44 variant ONLY. Prolonged exposure to water droplets on cover surface may result in superficial peeling of Nano louvre film without affecting integrity of housing ingress  
<sup>7</sup> LEDmix requires two colour temperature choices      <sup>8</sup> Due to the clear, flush potted polyurethane top layer on IP67 MOMO a colour shift of +/- 20K should be expected

### Code Example:

MM	-	SA	-	C	-	s	-	R207	-	2150	-	m	520	-	67	-	0300	-	D67A	-	g
MOMO		Silver Anodised		Diffused				R207		2100K+5000K		519.8mm		IP67		300mm/11.81"		Double ø4.3mm sheath IP67 connector		DC 24V	

### ACCESSORIES

#### Mounting Accessories

KKCP-03	Clip (1no.)
KKCP-53	Clip (500no.)
KKCP-09	Lock Clip
KKBK-07	Fixing plate
KKBK-21	Adjustable bracket

\* Refer to **Mounting accessories** on **Accessories** pages

#### Connection Accessories

CN67-4P-0300	IP67 4 PIN LEDmix male & female 300mm/11.81" pair
CN67-4P-1000	IP67 4 PIN LEDmix male & female 1000mm/39.37" pair
CN67-4P-3000	IP67 4 PIN LEDmix male & female 3000mm/118.11" pair

\* Refer to **Power feed** on **Accessories** pages

#### Exterior Junction Boxes

KKJB-07	IP67 Slim J-Box
KKJB-07R	Potting Resin for IP67 Slim J-Box

\* Refer to **Exterior Junction Boxes** on **Accessories** pages

#### PSU/Driver

0-10V/1-10V/DALI/DMX

\* Refer to **Driver/PSU Options** page for details or provide requirement and KKDC to offer the suitable option

### LED ENGINE VARIANTS (LED STRIP TYPE)

Colour	LED	Lumen/m	Lumen/ft	W/m	W/ft	Spec Doc	Length	Increment
Single CCT	R007	441	135	7	2.13	MOMO R007	103-2020mm (4.05-79.53in)	41.7mm (1.64in)
	R014	904	275	14	4.27	MOMO R014	103-2020mm (4.05-79.53in)	41.7mm (1.64in)
	R020	1280	390	20	6.1	MOMO R020	103-2020mm (4.05-79.53in)	41.7mm (1.64in)
	R030	1813	552	30	9.14	MOMO R030	103-2020mm (4.05-79.53in)	41.7mm (1.64in)
	A040	3960	1207	40	12.19	MOMO A040	97-1520mm (3.82-59.84in)	38.46mm (1.51in)
	<b>Warm Dim/Dynamic White</b>	<b>R207</b>	<b>1004</b>	<b>306</b>	<b>16</b>	<b>4.88</b>	<b>MOMO R207</b>	<b>103-2020mm (4.05-79.53in)</b>
RGB	501	Red 114 Green 244 Blue 38 RGB 350	Red 35 Green 74 Blue 12 RGB 107	15.6	4.75	MOMO RGB	94-2011mm (3.70-79.17in)	41.7mm (1.64in)
RGBW	R201	1263	385	20	6.1	MOMO RGBW	155-2030mm (6.10-79.92in)	62.5mm (2.46in)

\* Performance data: s-line, clear cover, 2100K + 5000K

# MOMO R207

## Length Availability List

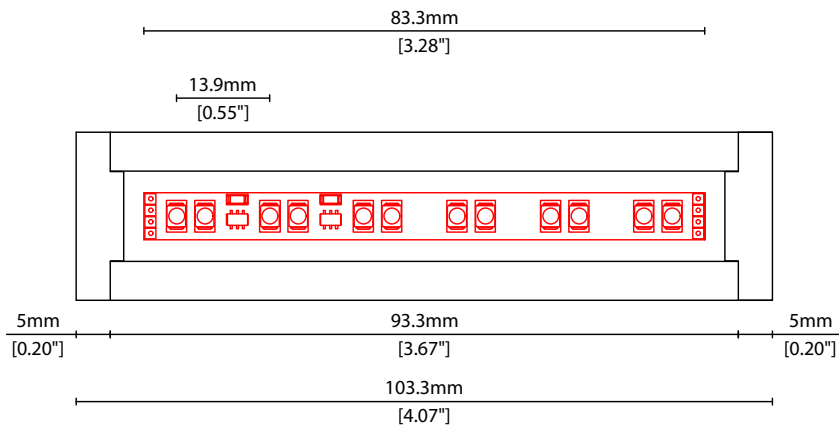


Length Code		Fixture Length <sup>1</sup>		LED Strip <sup>2</sup>		End Cap Dimension <sup>3</sup>		Wattage (W)	Output (lm)
Metric	Imperial(US)	Metric	Imperial(US)	Metric	Imperial(US)	Metric	Imperial(US)		3000K (Test Data)
m0103	i0004	103mm	4.07in	83mm	3.28in	10mm	0.39in	1.67	120
m0187	i0007	187mm	7.35in	167mm	6.56in	10mm	0.39in	3.33	240
m0270	i0011	270mm	10.63in	250mm	9.84in	10mm	0.39in	5.00	360
m0353	i0014	353mm	13.91in	333mm	13.12in	10mm	0.39in	6.67	480
m0437	i0017	437mm	17.19in	417mm	16.40in	10mm	0.39in	8.33	600
m0520	i0020	520mm	20.47in	500mm	19.69in	10mm	0.39in	10.00	720
m0603	i0024	603mm	23.75in	583mm	22.97in	10mm	0.39in	11.67	840
m0687	i0027	687mm	27.03in	667mm	26.25in	10mm	0.39in	13.33	960
m0770	i0030	770mm	30.31in	750mm	29.53in	10mm	0.39in	15.00	1080
m0853	i0034	853mm	33.60in	833mm	32.81in	10mm	0.39in	16.67	1200
m0937	i0037	937mm	36.88in	917mm	36.09in	10mm	0.39in	18.33	1320
m1020	i0040	1020mm	40.16in	1000mm	39.37in	10mm	0.39in	20.00	1440
m1103	i0043	1103mm	43.44in	1083mm	42.65in	10mm	0.39in	21.67	1560
m1187	i0047	1187mm	46.72in	1167mm	45.93in	10mm	0.39in	23.33	1680
m1270	i0050	1270mm	50.00in	1250mm	49.21in	10mm	0.39in	25.00	1800
m1353	i0053	1353mm	53.28in	1333mm	52.49in	10mm	0.39in	26.67	1920
m1437	i0057	1437mm	56.56in	1417mm	55.77in	10mm	0.39in	28.33	2040
m1520	i0060	1520mm	59.84in	1500mm	59.06in	10mm	0.39in	30.00	2160
m1603	i0063	1603mm	63.12in	1583mm	62.34in	10mm	0.39in	31.67	2280
m1687	i0066	1687mm	66.40in	1667mm	65.62in	10mm	0.39in	33.33	2400
m1770	i0070	1770mm	69.69in	1750mm	68.90in	10mm	0.39in	35.00	2520
m1853	i0073	1853mm	72.97in	1833mm	72.18in	10mm	0.39in	36.67	2640
m1937	i0076	1937mm	76.25in	1917mm	75.46in	10mm	0.39in	20.00	1440
m2020	i0080	2020mm	79.53in	2000mm	78.74in	10mm	0.39in	40.00	2880

<sup>1</sup> Actual total overall length of light fixture (LED strip + end caps + void/wire hole)

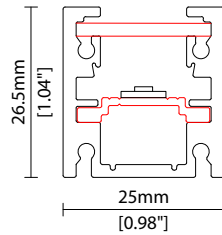
<sup>2</sup> Actual length of PCB strip

<sup>3</sup> Actual length of 2x end caps

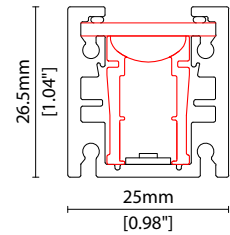
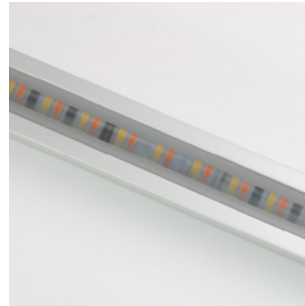


### COVER/LENS OPTIONS

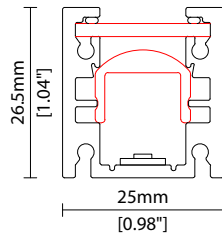
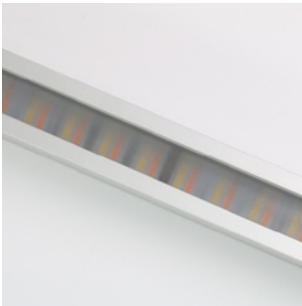
\* Options are an integral part of the fixture ordering codes. Please refer to **Code Table** pages.



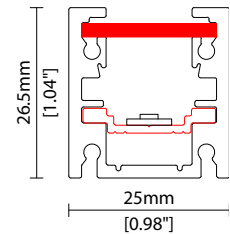
**B** Clear Cover  
W25.0/H26.5mm (W0.98/H1.04")



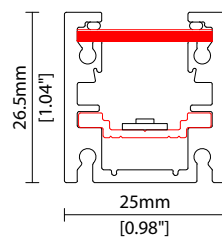
**P** Clear Cover +  
KKLN-01 (14°) lens  
W25.0/H26.5mm (W0.98/H1.04")



**A** Clear Cover +  
KKLN-03 (23°) lens  
W25.0/H26.5mm (W0.98/H1.04")



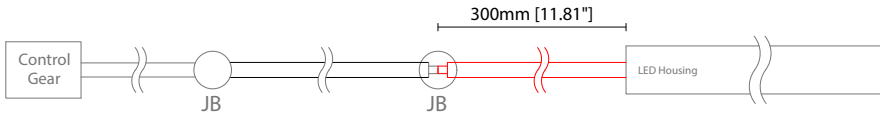
**C** Diffused Cover  
W25.0/H26.5mm (W0.98/H1.04")



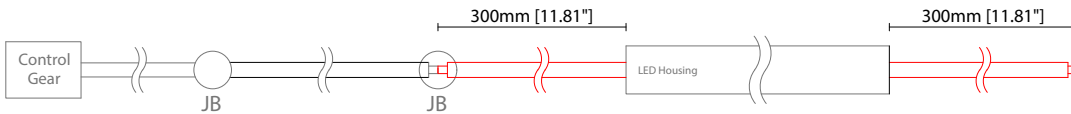
**CN** Diffused Cover + Nano Louvre  
W25.0/H26.5mm (W0.98/H1.04")

### POWER FEED OPTIONS

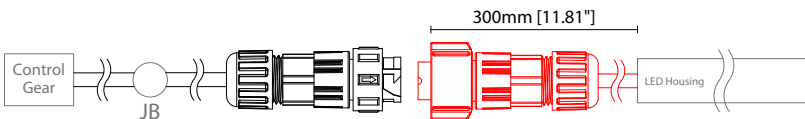
0300 S00A 300mm (11.81") Single Ø4.3mm sheath tail



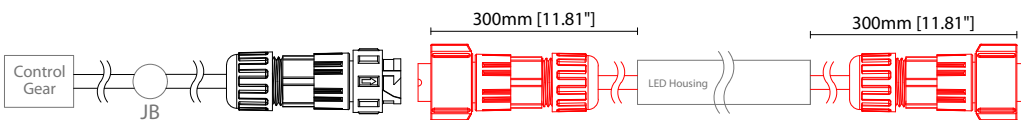
0300 D00A 300mm (11.81") Double Ø4.3mm sheath tail



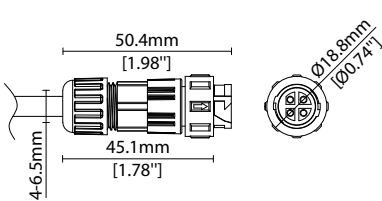
0300 S67A 300mm (11.81") Single ø4.3mm sheath IP67 connector



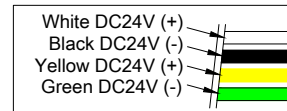
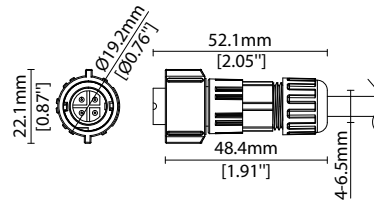
0300 D67A 300mm (11.81") Double ø4.3mm sheath IP67 connector



4 Pin LEDmix Female Connector IP67



4 Pin LEDmix Male Connector IP67



#### Key

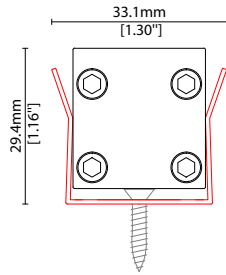
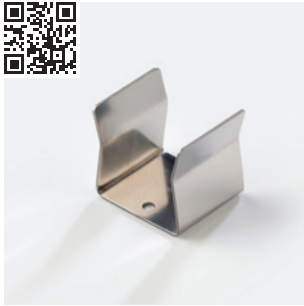
Control Gear Power supply, sub-controllers & control systems

JB Junction box / cable connection

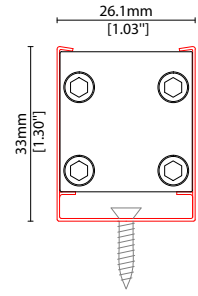


## MOUNTING ACCESSORIES

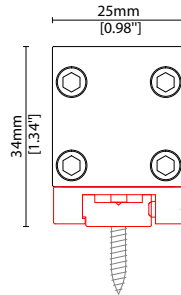
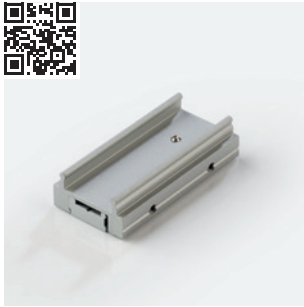
Note: Accessories are to be ordered separately with corresponding code shown below.



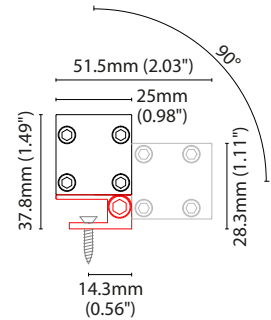
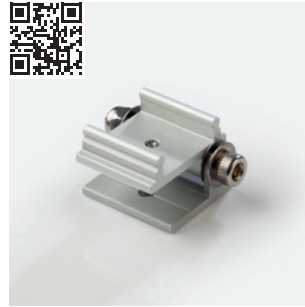
**KKCP-03** (1no.)  
**KKCP-53** (500no.)  
Clip (allow 3 per metre/40in)  
S/Steel finish  
L25/W33.1/H29.4mm  
(L0.98/W1.3/H1.16")



**KKCP-09**  
Lock clip (allow 2 per metre/40in)  
S/Steel finish  
L25/W26.1/H33mm  
(L0.98/W1.03/H1.3")

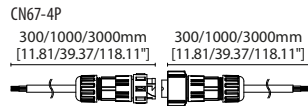


**KKBK-07**  
Fixing plate (allow 2 per metre/40in)  
Anodised aluminium finish  
L50/W25/H34mm  
(L1.97/W0.98/H1.34")  
Pre-assembled in factory



**KKBK-21**  
Adjustable bracket  
(allow 2 per metre/40in)  
Anodised aluminium finish  
L34/W25/H37.8mm  
(L1.34/W0.98/H1.49")  
Pre-assembled in factory

## POWER FEED



**CN67-4P-0300** 300mm (11.81in) pair  
**CN67-4P-1000** 1000mm (39.37in) pair  
**CN67-4P-3000** 3000mm (118.11in) pair

IP67

4 PIN male + female (RGB/LEDmix) connector set

### EXTERIOR JUNCTION BOXES



**KKJB-07**

IP67 Slim J-Box  
(including type A,B,C, D bushings)



**KKJB-07R**

Potting resin for IP67 Slim J-Box

### KKDC CONTROL



**KKDM-06** 1-10V

visDIM dimmable sub-controller  
(4 x 8A max @ 12-36V)

IP20  
Plastic housing  
L170/W59/H29mm  
(L6.69/W2.32/H1.14in)



**KKSC-05** DMX

visDIM dimmable sub-controller  
(4 x 5A max @ 12-36V)

IP20  
Plastic housing  
L170/W53.4/H28mm  
(L6.69/W2.10/H1.10in)



**KKDL-02** DALI

visDIM dimmable sub-controller  
(4 x 8A max @ 12-36V)

IP20  
Plastic housing  
L170/W59/H29mm  
(L6.69/W2.32/H1.14in)



**KKDL-03** DALI

visDIM dimmable sub-controller  
(4 x 5A max @ 12-36V)

IP20  
Plastic housing  
L166/W53.4/H23mm  
(L6.54/W2.10/H0.91in)

### AVAILABLE PSU OPTIONS

Control Mode	PSU (Order Code)	Input Voltage AC	Output Voltage DC	Rated Output Current	Rated Power	Dim %	IP Rating
Switched	CEN-60-24	90-295V	24V	2.5A	60W	-	IP67
	HLG-60H-24	90-305V	24V	2.5A	60W	-	IP67
	HLG-100H-24	90-305V	24V	4.0A	100W	-	IP67
	HLG-150H-24	90-305V	24V	6.3A	150W	-	IP67
	HLG-240H-24	90-305V	24V	10A	240W	-	IP67
0-10V (1-10V)	PWM-40-24	90-305V	24V	1.67A	40W	100-0.15 (100-10)	IP67
	PWM-60-24	90-305V	24V	2.5A	60W	100-0.15 (100-10)	IP67
	PWM-90-24	90-305V	24V	3.67A	90W	100-0.15 (100-10)	IP67
	PWM-120-24	90-305V	24V	5.0A	120W	100-0.15 (100-10)	IP67
DALI	LIN100A1	120-277V	24V	1A per channel	100W	100-0.1	IP66/IP40
DMX RGB	LIN100A1	120-277V	24V	1.33A per channel	100W	100-0.1	IP66/IP40
DMX RGBW	LIN100A1	120-277A	24V	1A per channel	100W	100-0.1	IP66/IP40

### Flicker Free Options - Combination of PSU+ sub-controller

Control Mode	PSU (Order Code)	Sub-controller (Order Code)	Input Voltage AC	Output Voltage DC	Rated Output Current	Rated Power	Dim %	IP Rating PSU/ Sub-controller
0-10V or 1-10V	CEN-60-24	KKDM-06	90-295V	24V	2.5A	60W	100-0.9	IP67/IP20
	HLG-60H-24	KKDM-06	90-295V	24V	2.5A	60W	100-0.9	IP67/IP20
	HLG-100H-24	KKDM-06	90-295V	24V	4.0A	100W	100-0.9	IP67/IP20
	HLG-150H-24	KKDM-06	90-295V	24V	6.3A	150W	100-0.9	IP67/IP20
	HLG-240H-24	KKDM-06	90-295V	24V	10.0A	240W	100-0.9	IP67/IP20
DALI	CEN-60-24	KKDL-02/03	90-295V	24V	2.5A	60W	100-0.1	IP67/IP20
	HLG-60H-24	KKDL-02/03	90-305V	24V	2.5A	60W	100-0.1	IP67/IP20
	HLG-100H-24	KKDL-02/03	90-305V	24V	4.0A	100W	100-0.1	IP67/IP20
	HLG-150H-24	KKDL-02/03	90-305V	24V	6.3A	150W	100-0.1	IP67/IP20
	HLG-240H-24	KKDL-02/03	90-305V	24V	10.0A	240W	100-0.1	IP67/IP20
DMX RGB	CEN-60-24	KKSC-05	90-295V	24V	2.5A	60W	100-0.9	IP67/IP20
	HLG-60H-24	KKSC-05	90-305V	24V	2.5A	60W	100-0.9	IP67/IP20
	HLG-100H-24	KKSC-05	90-305V	24V	4A	100W	100-0.9	IP67/IP20
	HLG-150H-24	KKSC-05	90-305V	24V	6.3A	150W	100-0.9	IP67/IP20
	HLG-240H-24	KKSC-05	90-305V	24V	10.0A	240W	100-0.9	IP67/IP20

<sup>1</sup> The items shown above cover the most frequently used specification but does not exhaust the possible options

<sup>2</sup> PSU and/or driver can be chosen from the table, or KKDC may recommend the best option upon receipt of the controls requirement and installation environment

<sup>3</sup> Electrical shop drawing will include detailed information of PSU and relevant control drivers

<sup>4</sup> Cut sheets are available on the controls section of [www.kkdc.lighting](http://www.kkdc.lighting) or upon request